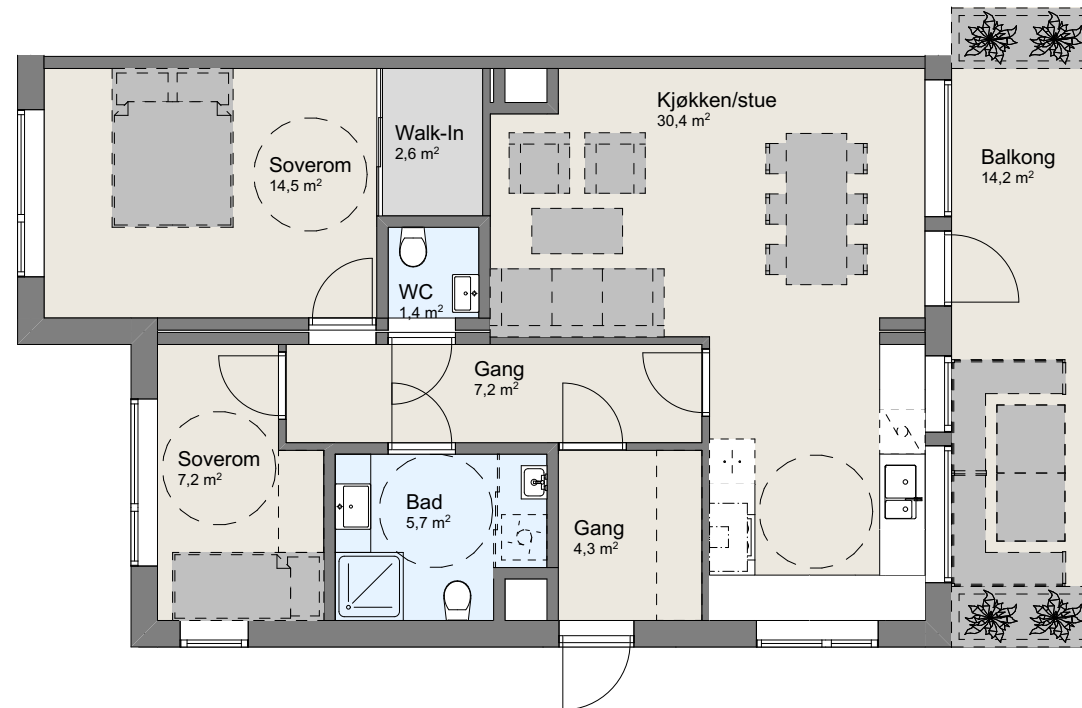
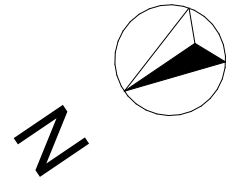


408

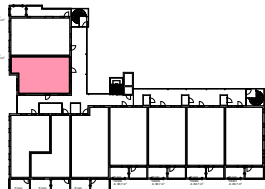
4. etg

3-roms

BRA: 79,0 m²
P-rom: 75,9 m²
Balkong: 14,2 m²



SVALGANG



Tromsø: Grønnegata 65 , Pb 1232, 9262 Tromsø
Oslo: Arbeidersamfunnetspl. 1, 0181 Oslo

E-post: post@atpa.no
Org nr 986 676 813

Prosjektnavn:
**Lønnegaarden
Terrasse**

Tiltakshaver:
Eiendomsgruppen AS

Tegning:
Leilighet 408

Dato:
13.11.2020

Mål:
1:100, 1:1500

Format:
A4